

FOR THE USE OF HIS WING SWING

• GOOD LUCK

7 x 6.6 PROP.

5 LIFTOP

"AILING EDGE"

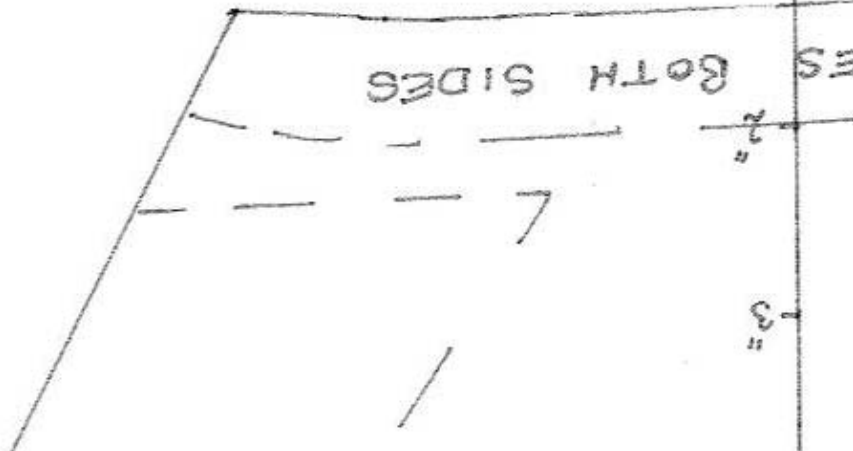
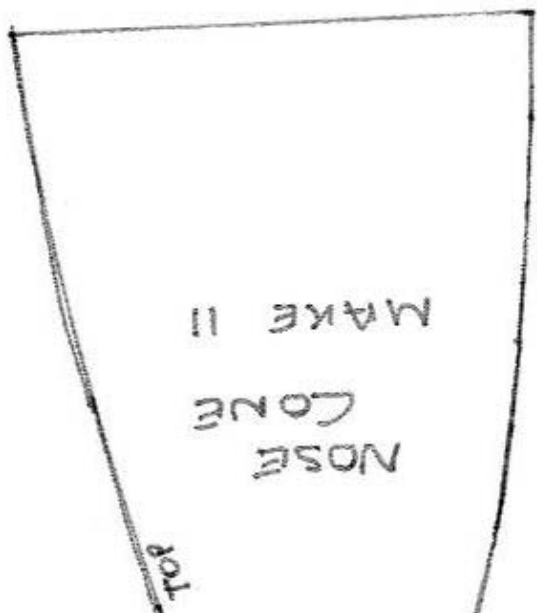
PER 180 SQ IN

LENGTH 36"
 A.W. 18.5 oz.
 WING A
 SETTINGS
 ELEVATOR 1 3/8 - + AT TR
 ALERONS 1 1/4 - + " "
 - 30% EXPO USE ON BOT
 CG 7 1/4" BACK FROM INTAKE
 PROTOTYPE USED
 HYPERION 2213/30 APC
 35 lb Lipo 1250 KOKHAN
 2 x 9g servos
 1 X HS 55 ON WING SWING

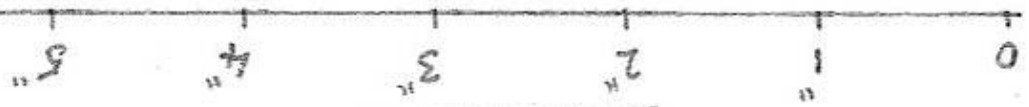
MY THANKS TO STEVE SHUMATE
 ASSY

SIDES AND
 TOUTS WHERE
 HAND OUTER
 WING SWING
 GOOD
 WALLS
 2 LAYS,
 SERVO ACCESS
 SUPPORTS,
 FUSECOVER,
 FUSE.

SHOWN. TO ALLOW AIR THROUGH INTAKES.
FIT INNER INTAKE WALLS THEN LOWER
PARTS. DO NOT FIT INTAKE TOP UNTIL W
ASSY IS IN PLACE.
BUILD UP WING SWING ASSY, CHECK FOR
OPERATION, CUT OUT INNER & OUTER FUSE
WHERE MARKED AND WHERE THE SPAR
FIT FORWARD INTAKE TOP AND REMOVE
PANEL, FIT $\frac{3}{8}$ TRIANGLE Balsa FOR SWING SPAR
FIT TAILERON SHAFT ASSY AND FIT REAR
FIT FIN IN PLACE, CARVE AND SHAPE
CUT HATCH IN T/DECK FOR SERVO ACCESS

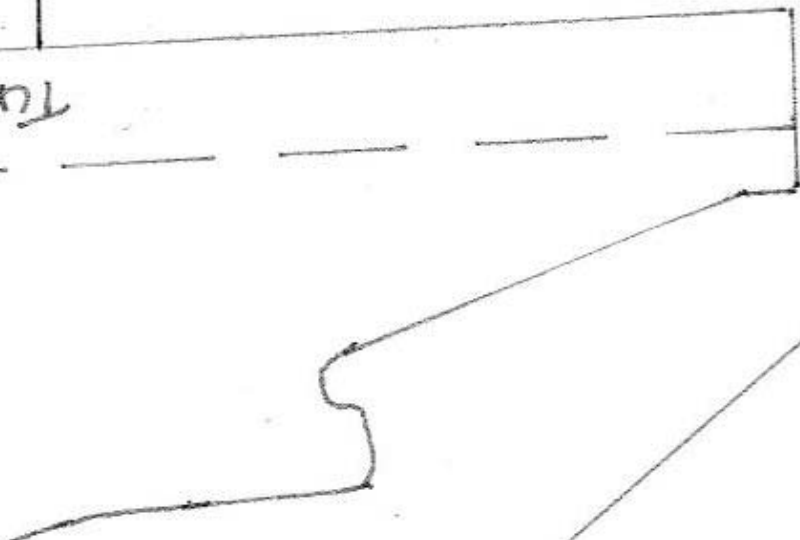


PLEASE CHECK SCALE IN IN

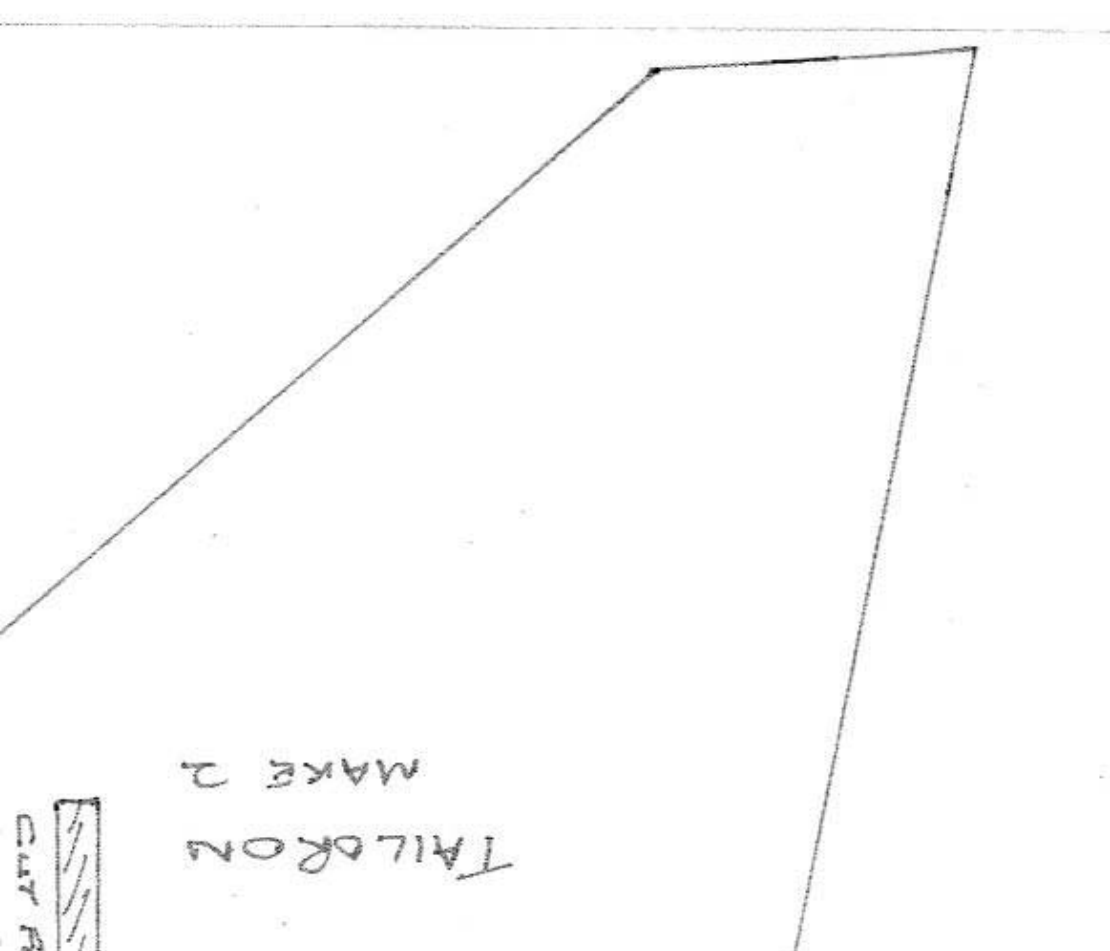


~~TRIM TO FIT GROE~~

TURTLE DECK CONTINU



READ



TAILORON
MAKE 2

CITY R

MOST OF THE
 FUSelage IS
 SQUARE ON THIS
 MODEL TYPE
 CHECK THE
 FUSelage.

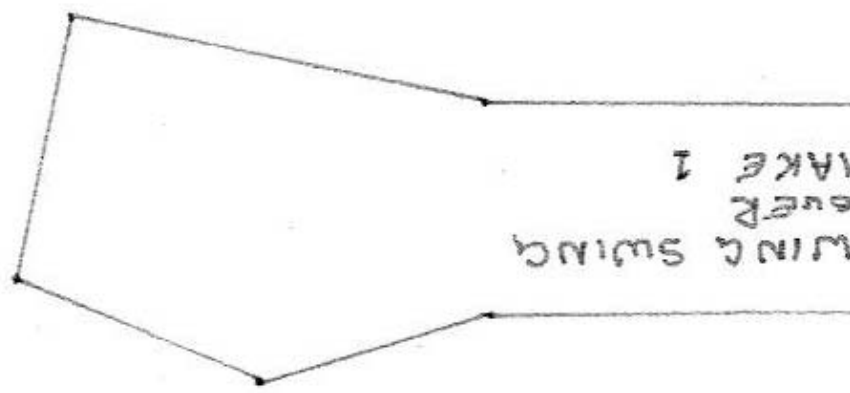
LAMINATE $\frac{3}{8}$ " DEPTH
 TO ROUND OFF
 REAR FUSelage
 TOP @ BOTTOM

* NOTE *

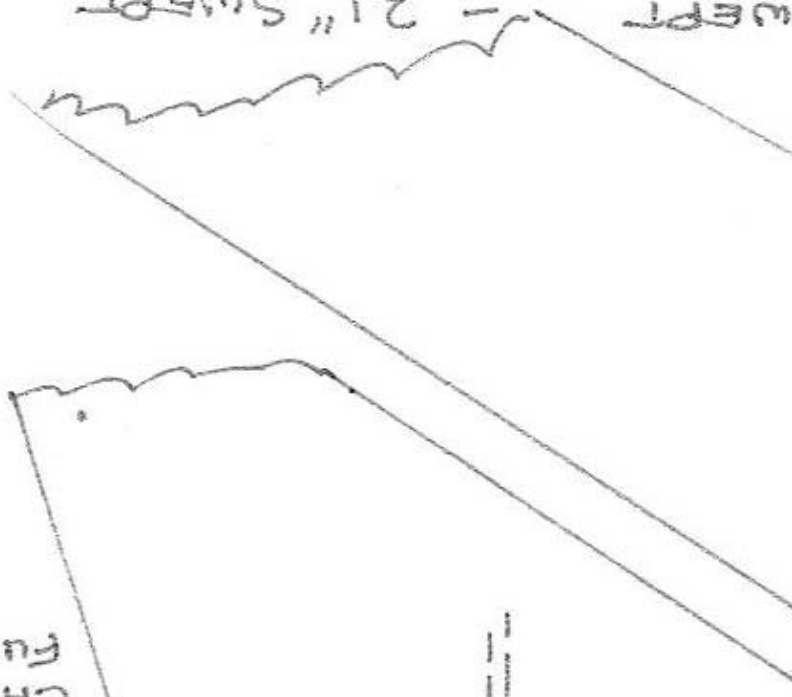
MOTOR MOUNT.

PORTS.
 LOWER
 R FOR
 UPPER

REAR FUSelage SIDGS.



WING SWING
 OVER
 TAKE 1



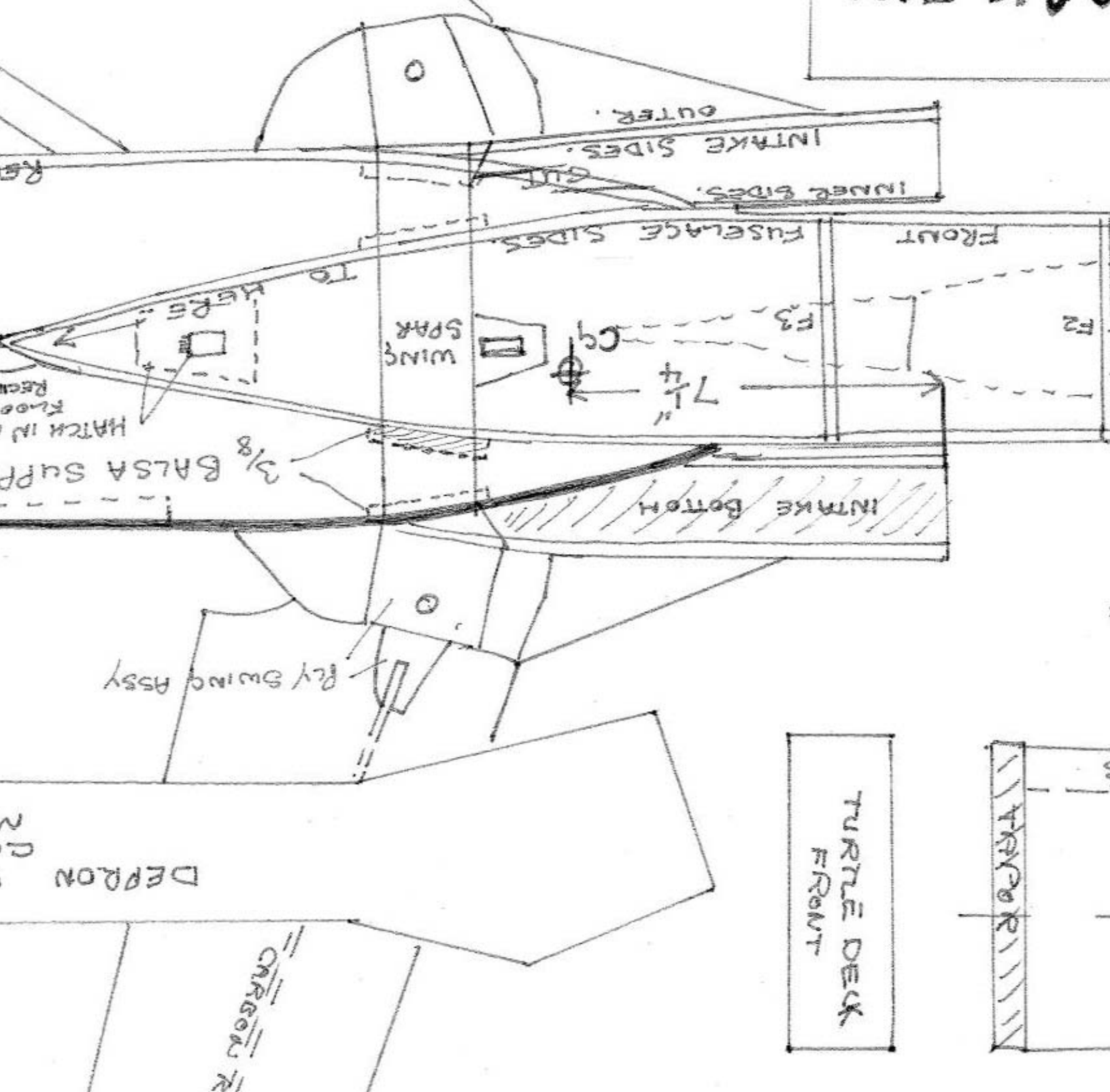
2 1/2" SWEEP

ARK FLY

FLOORS
FLOOR

DATA

WING SPAN 33.5" FULLY UNS



TURLE DECK
FRONT

WING

DECK

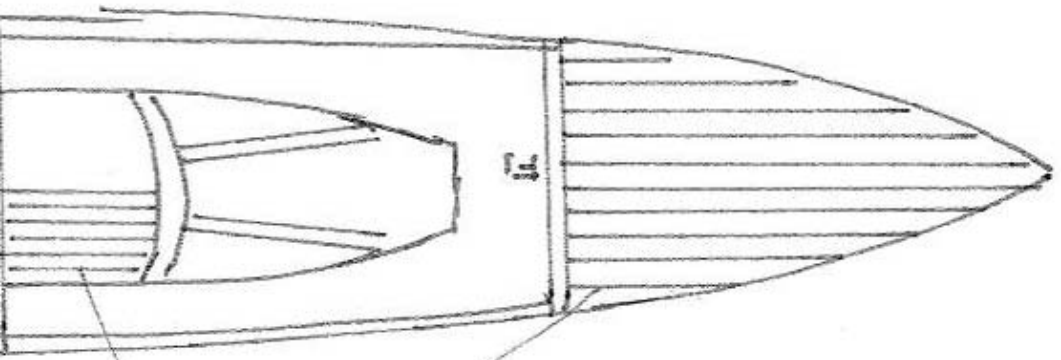
WING

20

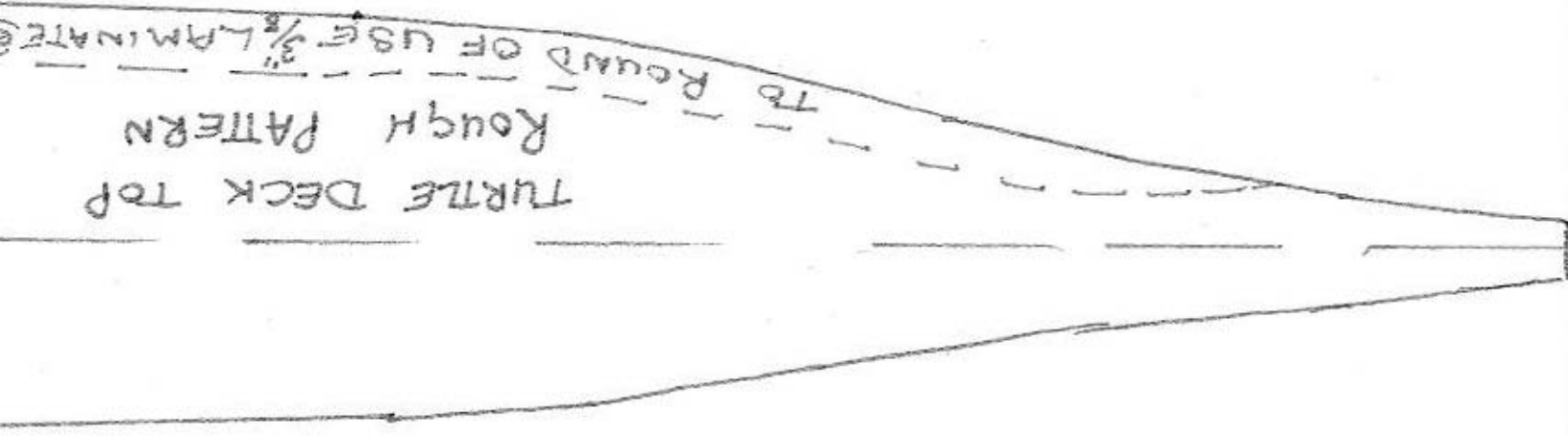
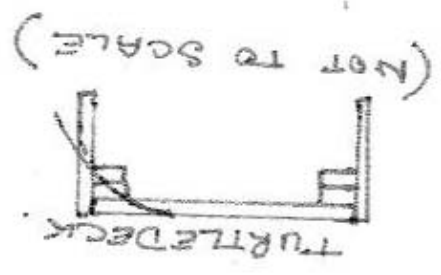
1 CUT ALL DEPRON PARTS 6MM Ply where s
 2 LAY OUT FORWARD AND REAR FUSELAGE
 AND GLUE TOGETHER. BUILD FRONT FUSE ON
 JOIN IN CENTER AT REAR. FIT REAR FUSE
 GLUE TO FRONT

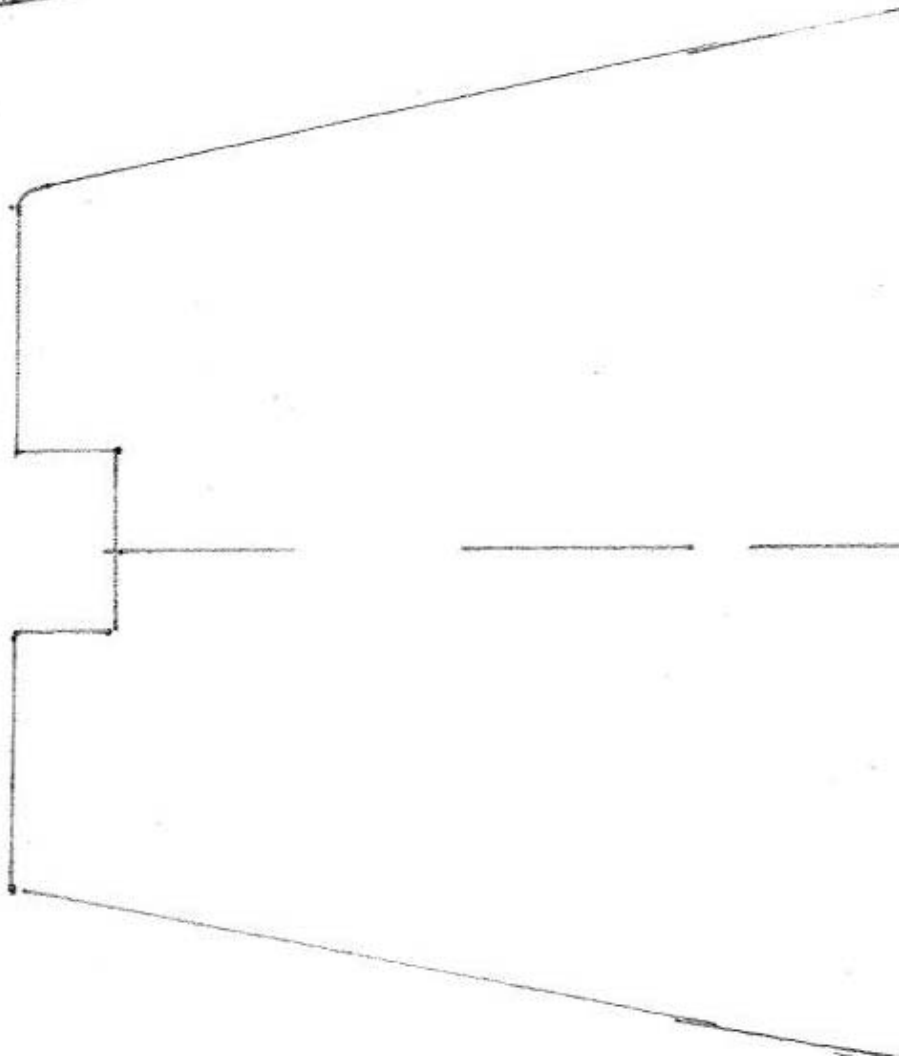
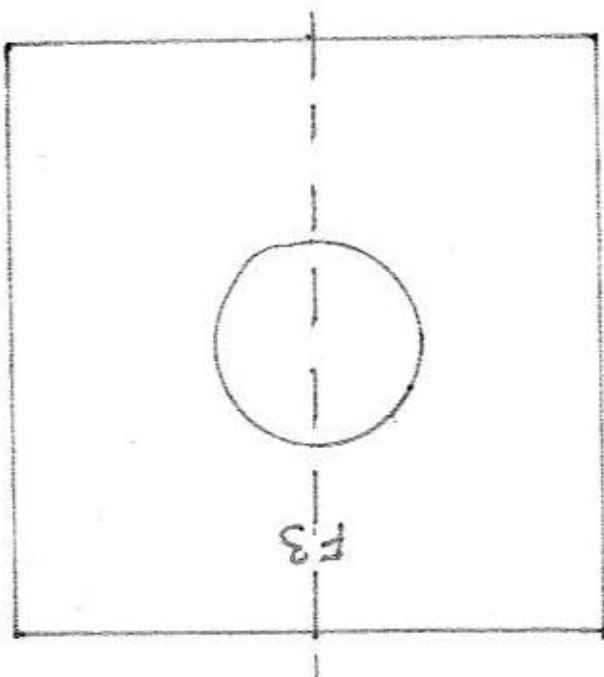
PLANS DRAWN BY ALAN J

TORNADO GRI P1

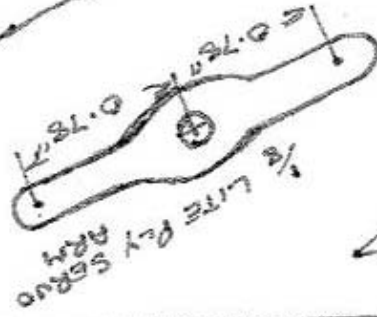


FABRICATE NOSE
 AND CANOPY





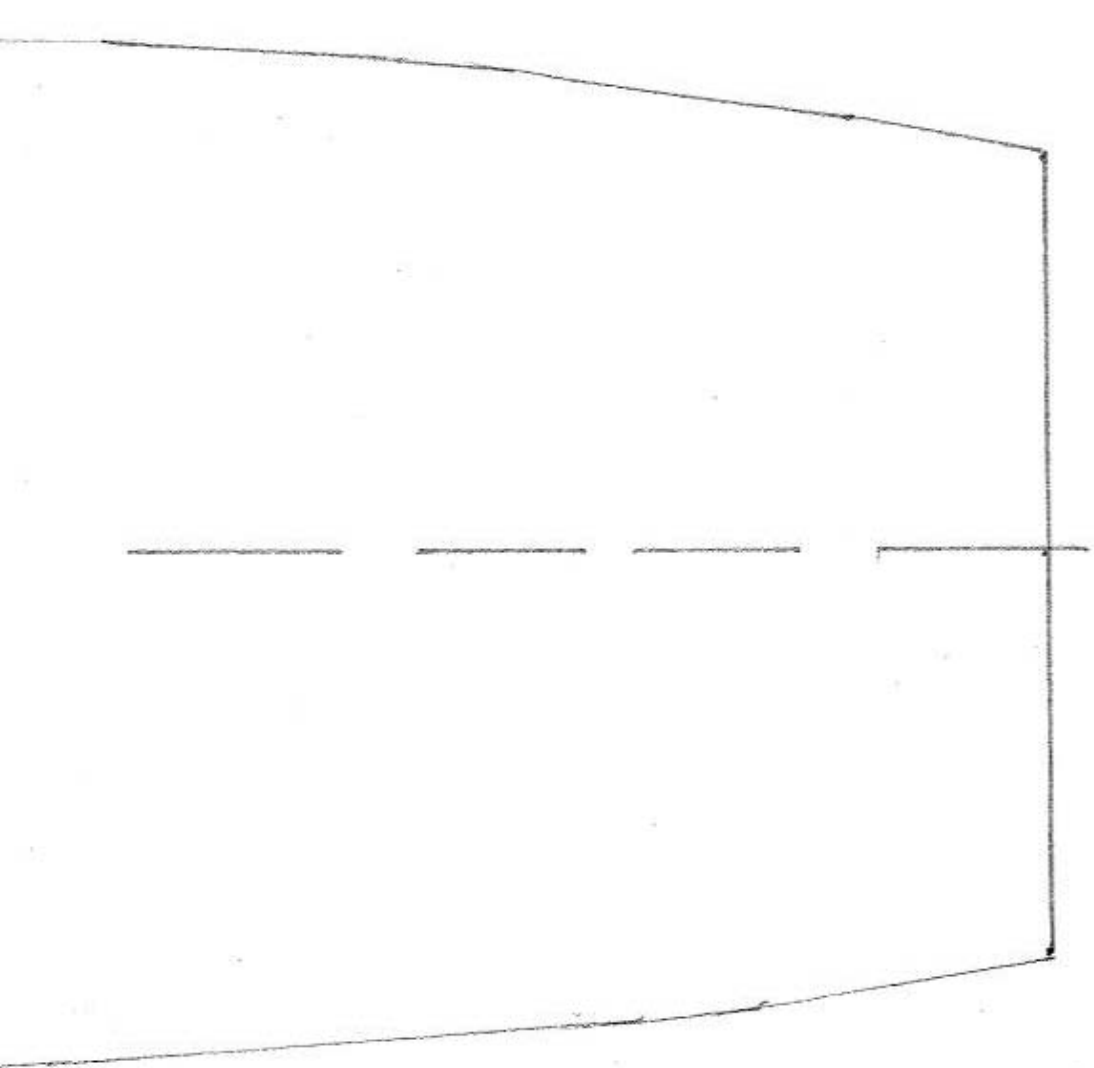
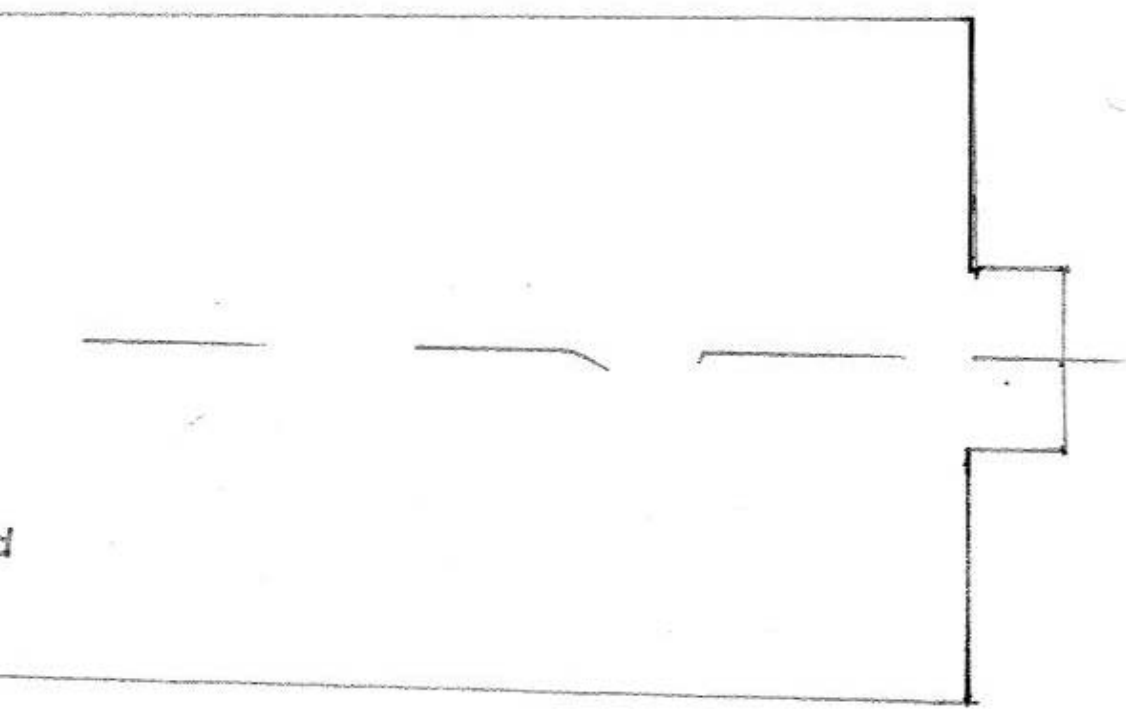
EPOXY



FRONT FUSELAGE
FLOOR
MAKE 1

REAR FUSELAGE FLOOR
MAKE 1

R.C. COLUMN



CHAMBER
INSIDE

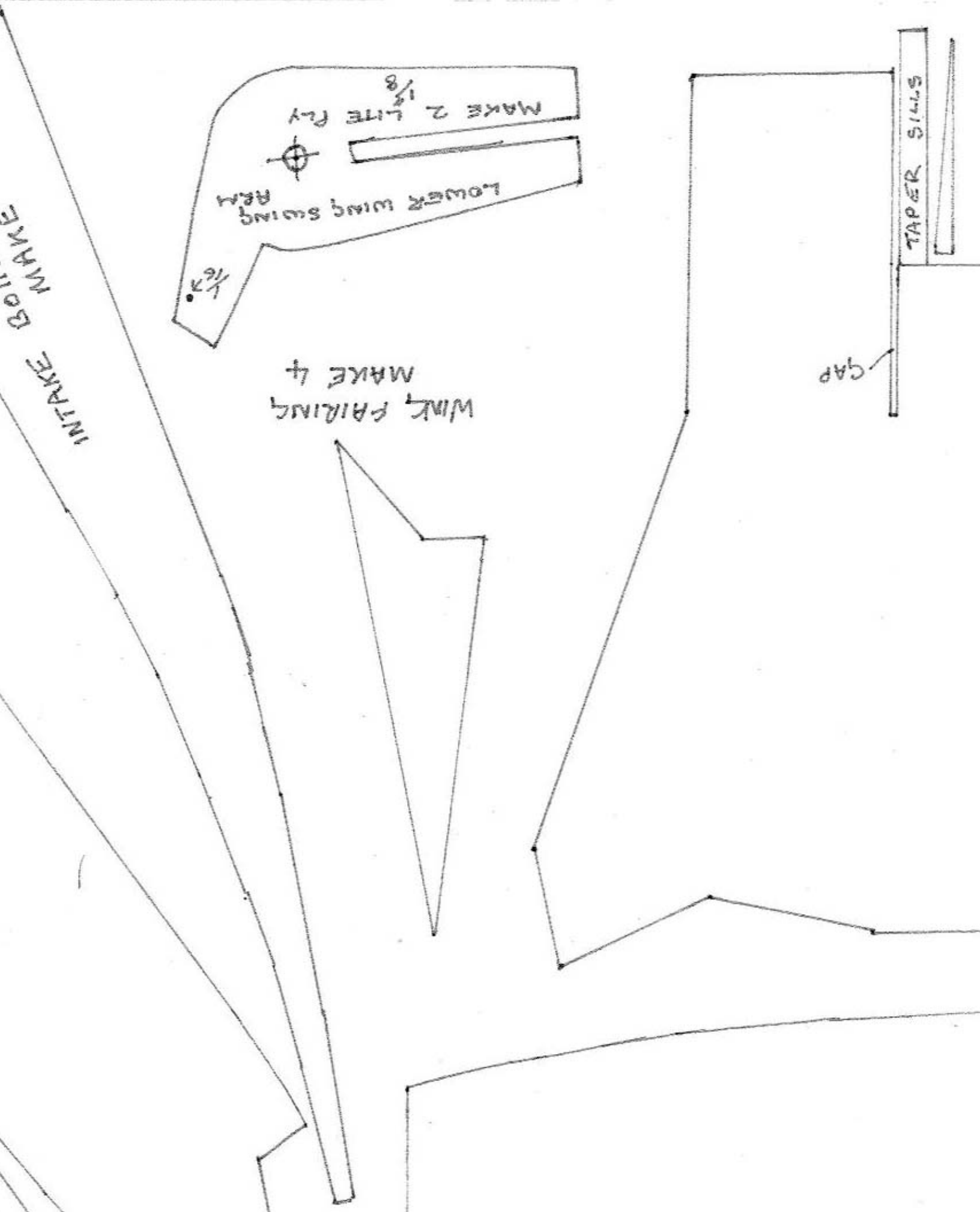
INTAKE SIDE
MAKE 2

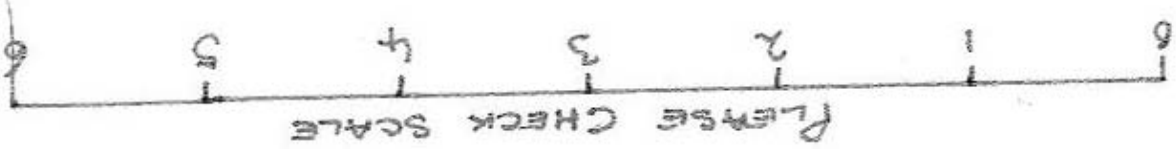
MAKE 2 SILTS

FORMS OUTLINE
FOR REFERENCE.
MAKE 9

3/8" BRSA

10



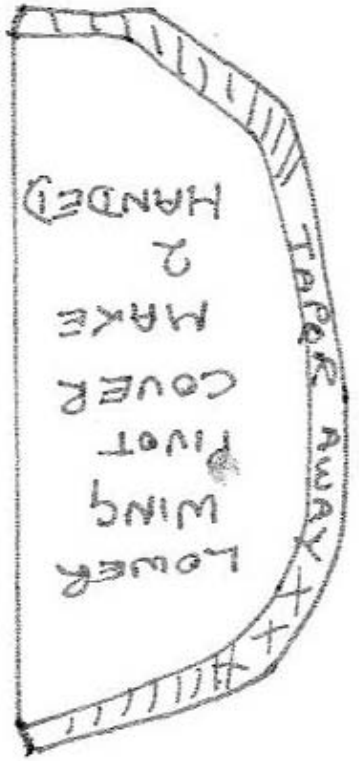
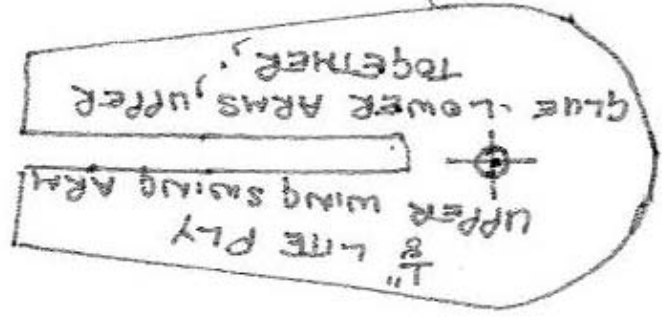


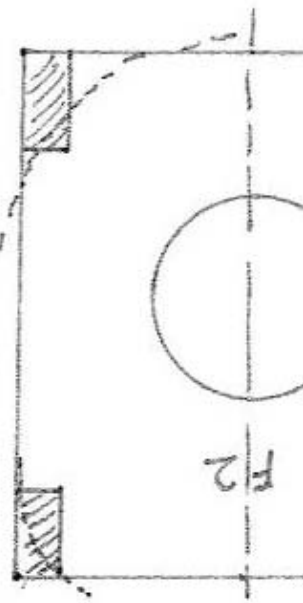
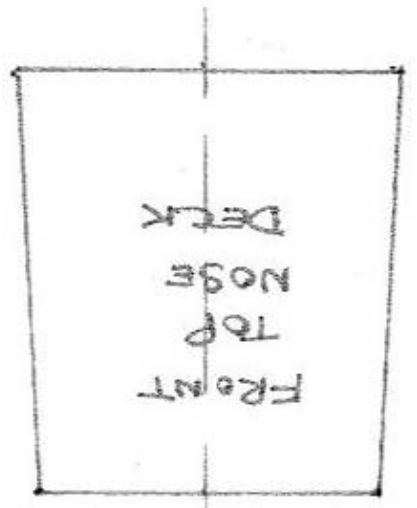
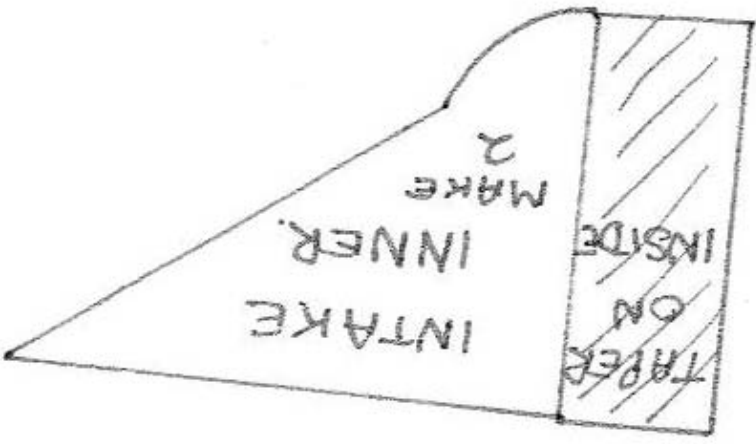
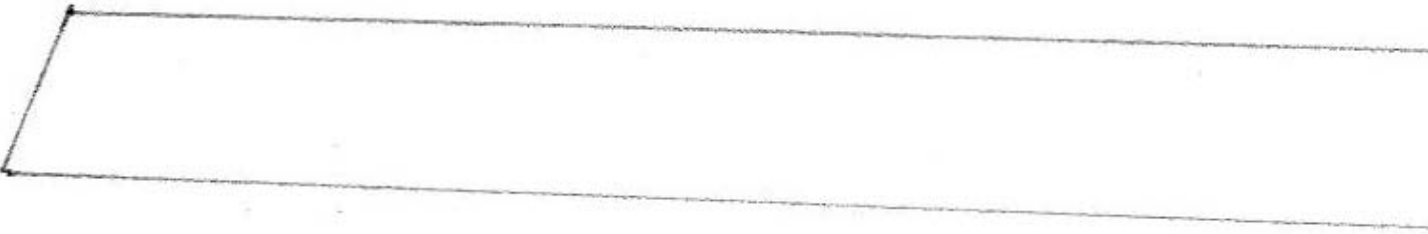
CUT AWAY FOR SERVO ACCESS AFTER BUILT

FRONT TOP FUSELAGE INTAKE COVER MAKE 1

ADD TAPE SILLS LATER OR CUT OUT WITH INTAKE COVER

ADD AFTER






CHASSIS

FLOW THROUGH

TURTLE DECK SIDE MAKE 2

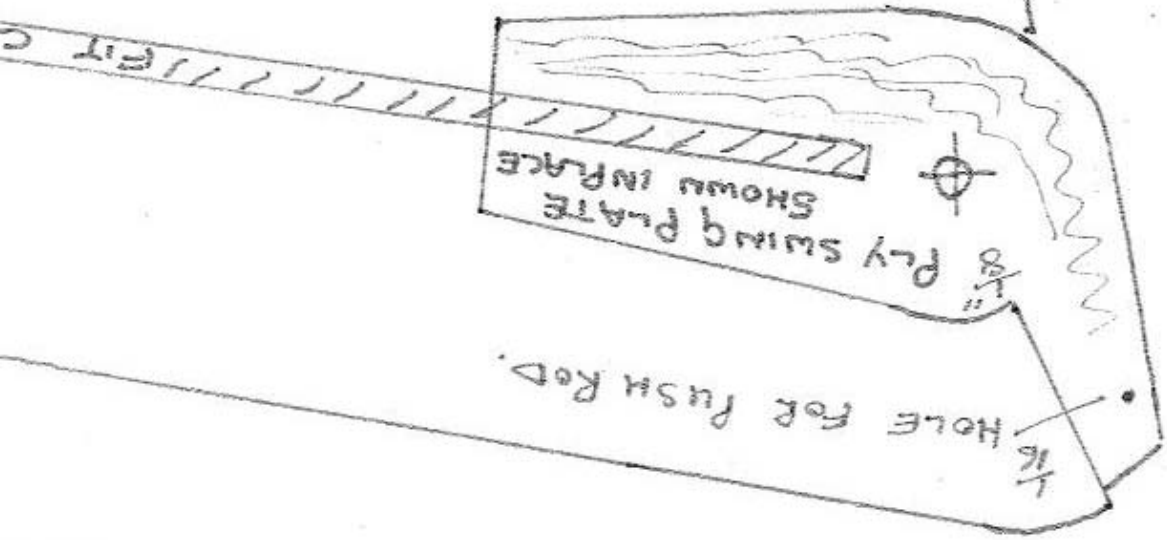
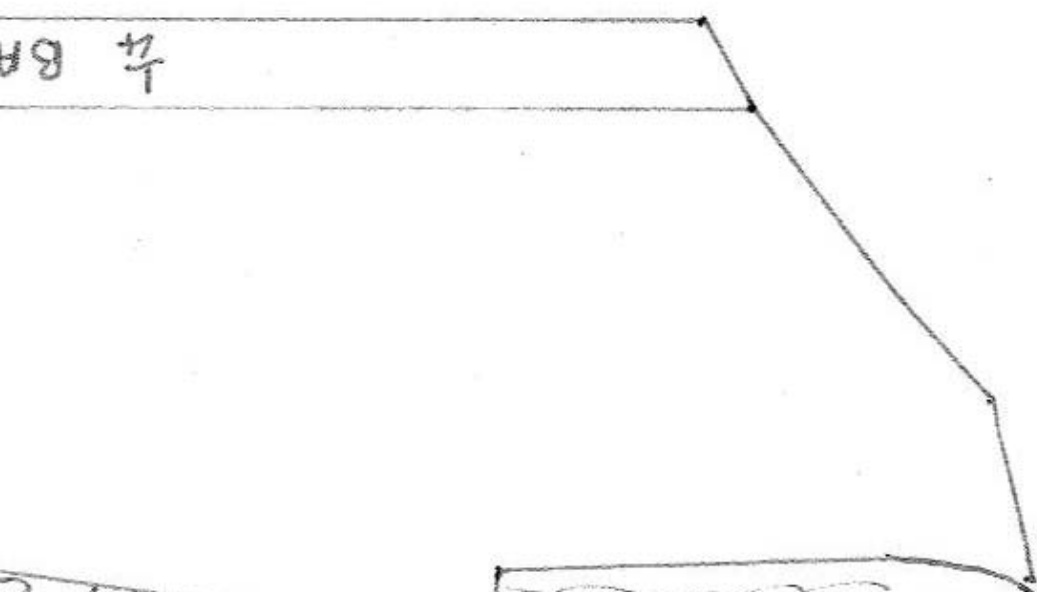
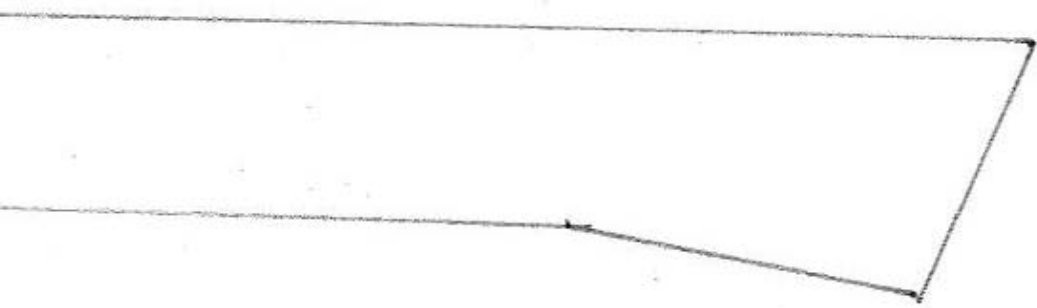
ALSO TRAILING EDGE

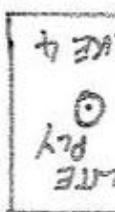
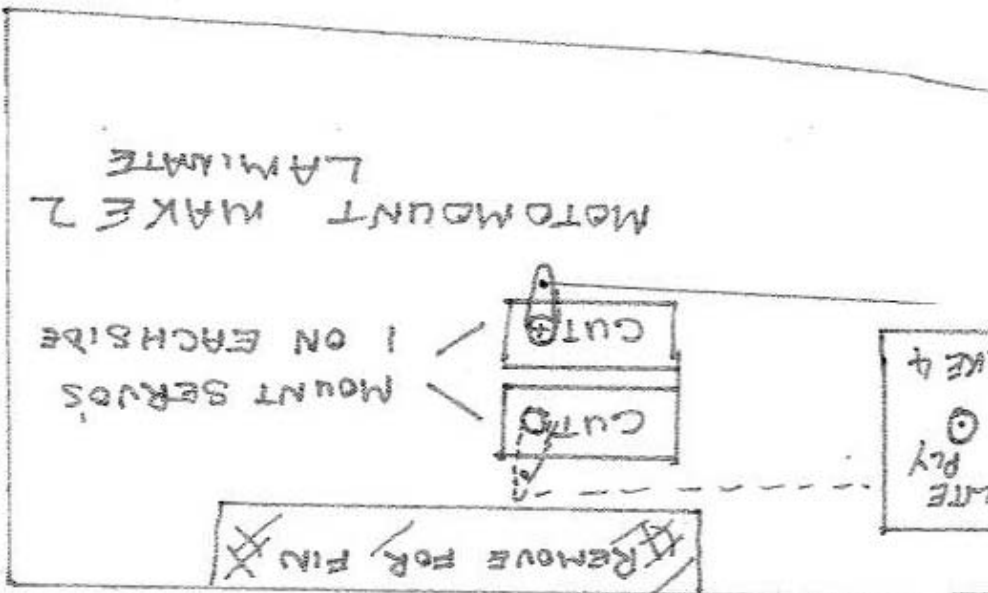
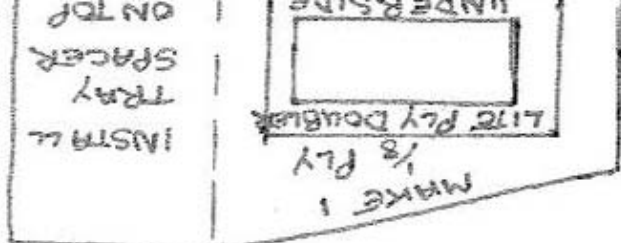
TAPER 

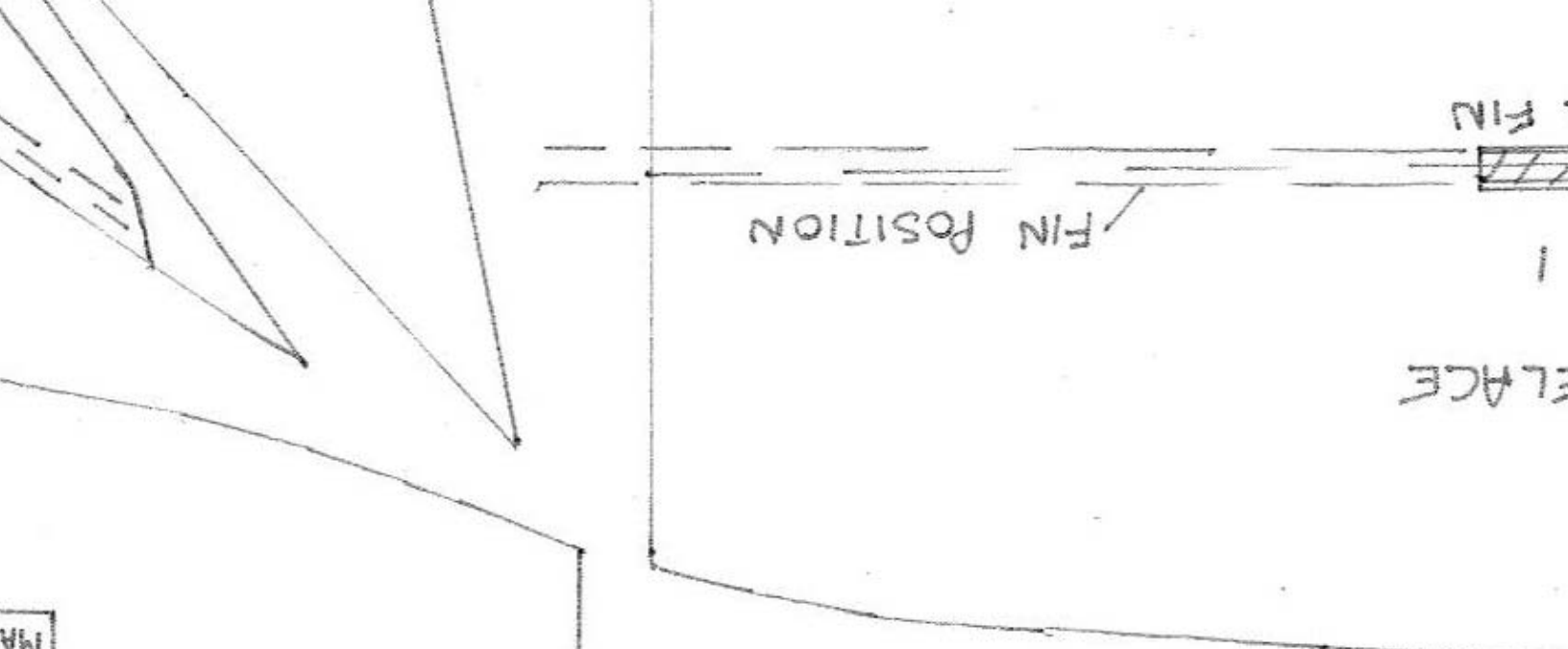
MAIN WING MAKE 2 HANDED.
CARBON ROD OR HARDWOOD Dowel



WING

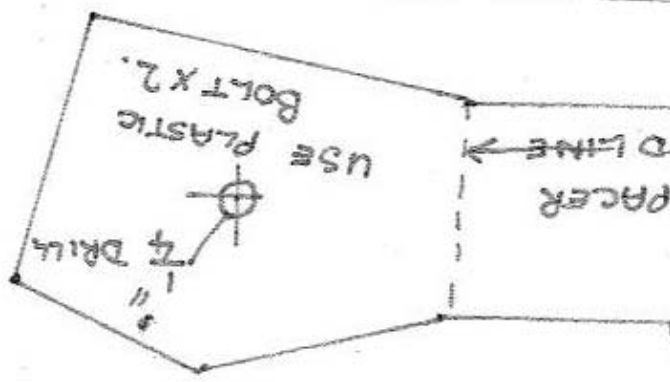




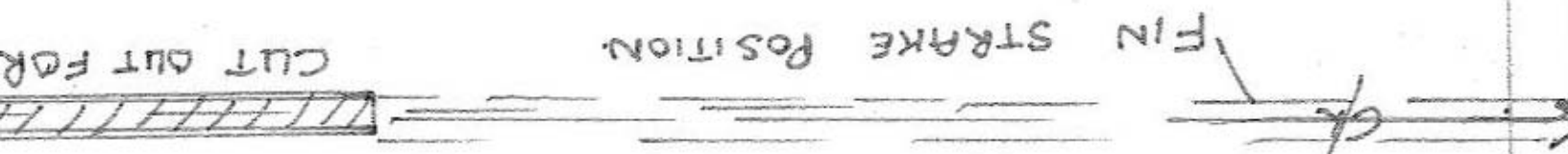


MA
1/8

STICK MOTOR MOUNT 3/8 HARD 3/8 WOOD.



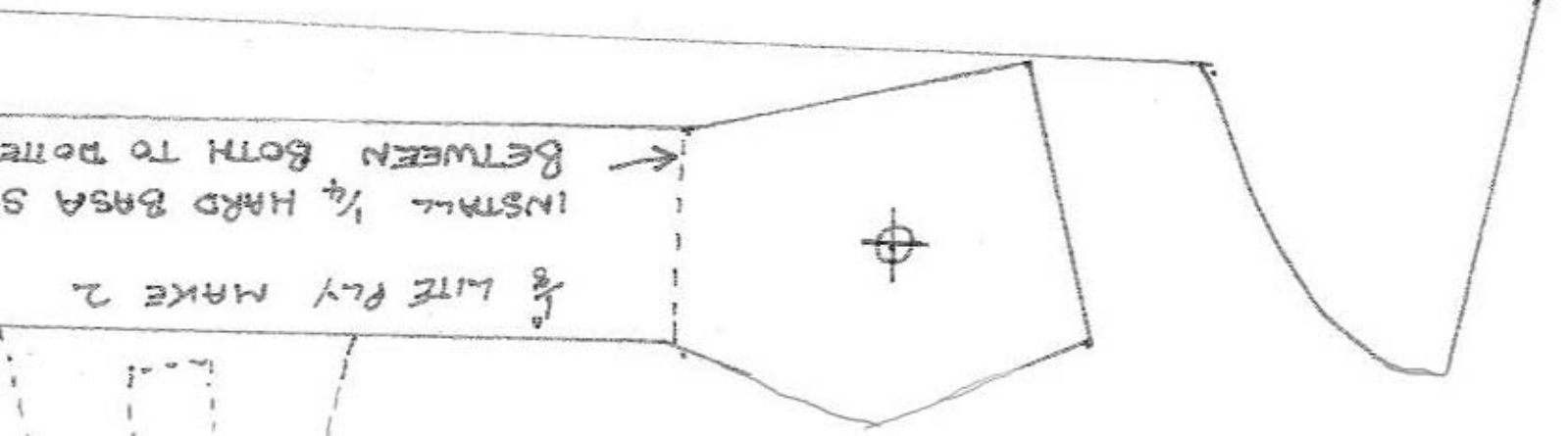
USE PLASTIC
BOLT X 2.



FIN STRAKE POSITION.

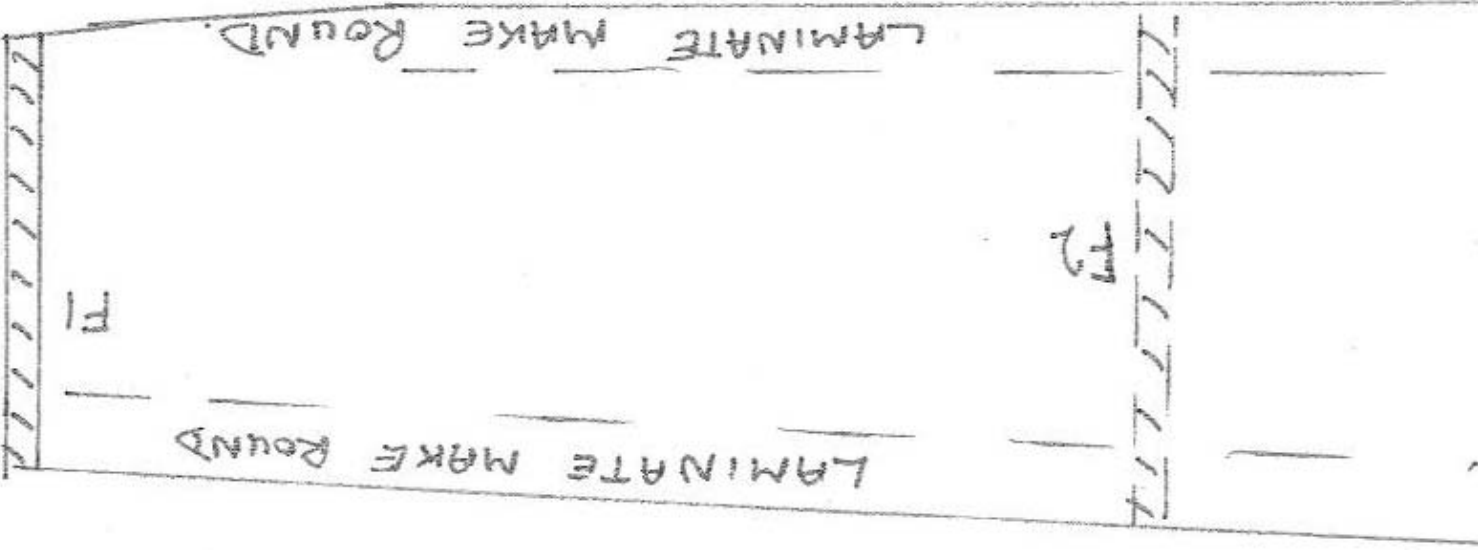
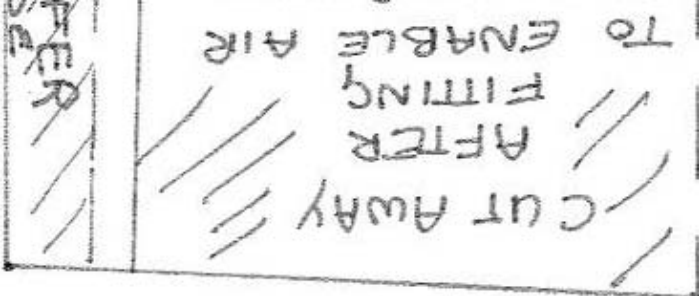
CUT OUT FOR

REAR FUSE
TOP
MAKE



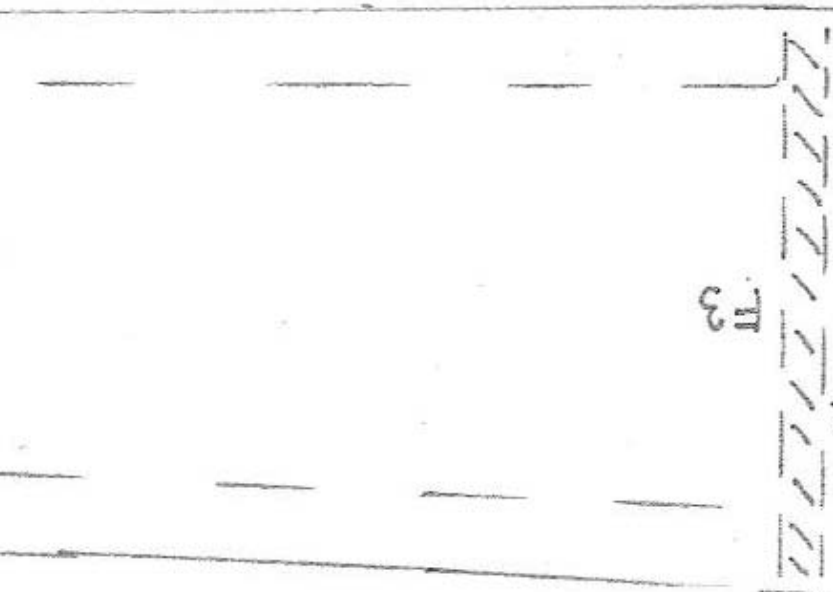
INSTALL 1/4 HARD BASA S
BETWEEN BOTH TO PORT

1/8 LITE PLY MAKE 2



ATE X 4
2 TAILERON. SHAFT

CUT AWAY FOR WIN



T3

CUT AWAY FOR WING SWING SPAR
CHECK FIT.
FUSELAGE SIDE
MAKE 2
PART #
AWAY FOR PUSH ROD.
CUT

